

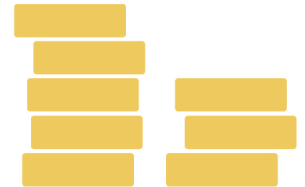
FINANCIAL ACCOUNTS

	2020		2019	
	£	£	£	£
STATEMENT OF COMPREHENSIVE INCOME				
Turnover		3,188,191		3,185,147
Operating expenditure		(2,246,767)		(2,427,880)
Operating surplus		941,424		757,267
Interest receivable and other income	687		5,133	
Interest payable and similar charges	(193,609)		(159,022)	
Revaluation gain on investment properties	-		139,620	
		(192,922)		(14,269)
Surplus for the year		748,502		742,998
Other comprehensive income				
Actuarial gain/(loss) of pension scheme		440,000		(222,000)
Total comprehensive income		1,188,502		520,998

FINANCIAL ACCOUNTS

STATEMENT OF FINANCIAL POSITION

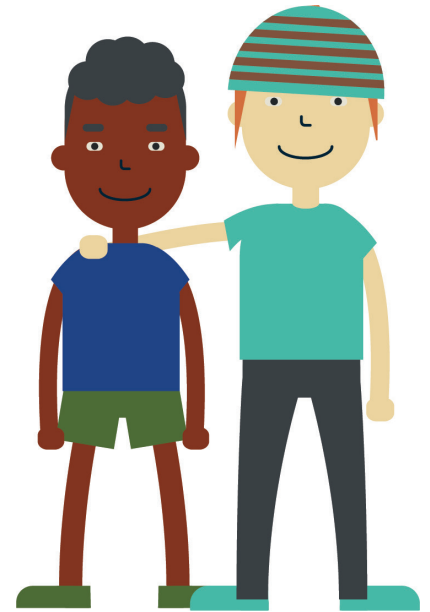
	2020		2019	
	£	£	£	£
Tangible fixed assets and investments		21,588,525		20,020,365
Housing properties		78,181		77,955
Other fixed assets		587,120		587,120
Investment properties		22,253,826		20,685,440
Current assets				
Debtors	359,953		367,064	
Cash and cash equivalents	190,073		372,119	
	(550,026)		739,183	
Creditors: amount falling due within 1 year	(1,363,631)		(836,785)	
Net current assets		(813,605)		(97,6020)
Total assets less current liabilities		21,440,221		20,587,838
Creditors: amount falling due after more than one year		(7,001,436)		(6,972,563)
Pension liability		(347,000)		(712,000)
Net assets		14,091,785		12,903,275
Capital and reserves				
Share capital		60		52
Revenue reserve		14,091,725		12,903,223
		14,091,785		12,903,275



STATEMENT OF CASH FLOWS

	2020		2019	
	£	£	£	£
Net cash inflow from operating activities		2,116,103		1,532,032
Cash flows from investing activities				
Purchase of property, plant and equipment	(2,162,334)		(1,995,056)	
Proceeds on disposal of property, plant and equipment	-		-	
Interest receivable	687		5,133	
		(2,161,647)		(1,989,923)
Cash flows from financing activities				
Interest paid	(174,609)		(149,022)	
Loan drawdown	510,000		700,000	
Repayment of borrowings	(471,901)		460,344	
Share capital issued	8		5	
		(136,502)		90,639
Net change in cash and cash equivalents		(182,046)		(367,252)
Cash and cash equivalents at 1 April		372,119		739,371
Cash and cash equivalents at 31 March		190,073		372,119

GOVERNANCE INFORMATION



Board of Management

Mary Black - Chair
Bill Finlay - Vice Chair
Michael Allan
Kerry Arrol
Zoe Brawn
Ruth Burley
Michael Donnelly
Nigel Fortnum
Colin Love
Etta Mounce
Leanne Stirling
Steven Travers

Retired:

Jacqueline Browne
Sonya Campbell-Perry
Sian Hughes
John Rodgers
Lesley Shepherd
Jane Valentine

Chief Executive and Secretary

Jason MacGilp, FCIH

Staff

11

Auditors

Scott Moncrieff, CA

Solicitors

Harper Macleod LLP

Bankers

Royal Bank of Scotland plc